

(19)
(12)

(KR)
(A)

(51) 。 Int. Cl.7
D06M 15/598

(11)
(43)

2003-0052014
2003 06 26

(21) 10-2001-0081754
(22) 2001 12 20

(71) 20

(72) 112 1105

106 1105

LG 1 107

106 1307

103 604

(74)

:

(54)

() , (0.01 10) %

, , , ,

가

가

가 가

가

가

가

가

가

가

(masking)

가

가

가

%

()

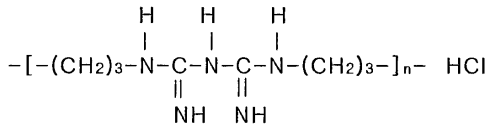
(0.01 10)

(0.01 10) %

()

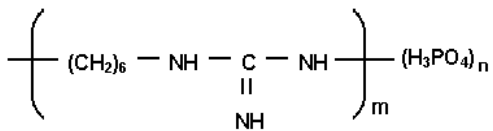
() (Poly(hexamethylenebiguanide)hydrochloride),
() (Poly(hexamethylene-guanidine)phosphate)
1 2

[1]



1 , n 12 .

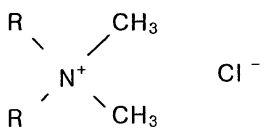
[2]



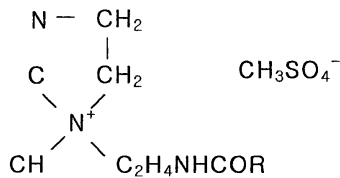
2 , m 1 100 , m/n 1 2 .

0.01 10 % 가
 , 10 % 0.01 % , 0.01 10 % 가
 , 0.01 10 % 가
 , 4 (dialkyl imidazolynium salt), 4 (dialkylammonium chloride), 4 (dialkylammonium salt), 4

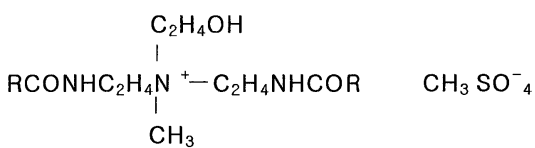
[3]



[4]



[5]



3 5 , R 12 18 .

4 1 % 1 30 % 4 , 30 %

(1 30) 가 (2 40) 10 20 (2 200) 10 20 (2 40) (1 50) 8 22 (15 40) 가

5 40 % 5 % , 40 %

0.01 % 0.01 가 1 8 14 20 1 0.01 30 % , 30 % 가

0.01 3 % 가

3 12 % 1 0.67 Mø

1 4, 1 4 가 1

(1 4) (, PHMB POE(30)) (-) (, PHMG)

(1 4) 1 POE(30)

1 1 4, 1 4 ,
% .

[1]

	1	2	3	4	1	2	3	4
PHMB	0.01	10	0	0	0	0	0	0
PHMG	0	0	0.01	10	0	0	0	0
	0.3	0.3	0.3	0.3	0.3	0.2	0.1	0
4	5	5	5	5	5	5	5	5
	0.1	0.1	0.1	0.1	0.1	0.1	0.1	0.1
	0.05	0.05	0.05	0.05	0.05	0.05	0.05	0.05
가	0.03	0.03	0.03	0.03	0.03	0.03	0.03	0.03
	100 %							

2 .

: 가

()

1 4, 1 4 (0.67 g/) , *Staphylococcus aureus* 10⁶ /Ml
37 24 ,

10⁶ , K 0693-1990 *Staphylococcus aureus*
PET .

가 (), 10⁴ 가 2 (), 가
10³ (x) . (), 10⁵ ,

()

100% 5 (6.7 Ml/10)
1 4, 1 4 (1:30, 25) 20 , 65% 2
4 (conditioning) . 가 1 4,
1 4 5 가 1 가
3.5 2 , 3 가 4.5 (), 3.5 4.5 (), 2.5
(x) .

()

100% 5 (6.7 Ml/10)
1 4, 1 4 (1:30, 25) 20 , 65% 2
4 (conditioning) . 가 1 4,
1 4 가 1

가 5 2 , 3 가 4.5 (), 3.5 4.5 (), 2.
 5 3.5 (), 2.5 (x)
 ()

20 , 2 cm x 15 cm 65 % 24 (conditioning) 0.1 %
 3 가 100 mm (), 70 가 100 mm 가 2 ()
), 40 mm (x) (), 40 70 mm ()
 ()

(1)
 KS K-0950 ()
 4 cm x 6 cm 20 ,
 65 % 24 (conditioning)
 (Rotary static tester, 가) KS K-0555B 60 600
 rpm 가 3 ,
 100 V 가 (), 100 가 2 (), 300 500 V (), 5
 00 V (x) (), 800 1200 V (), 1200 1800 V (), 1800 V
 V (x)

(2)
 1 4, 1 4
 20 , 40 % 24 (conditioning)
 (Rothschild) 150 V 가 ,
 가 3 , 가 10 (sec)
 (), 10 10² (), 10² 10³ (), 10³ (x)

[2]

가	1	2	3	4	1	2	3	4
					x	x	x	x

2 , 1 4 1 4

